

3D Face
Biometric Research

End-Users' Group Meeting Berlin

21th of February 2008

3D Face Prototype Integration

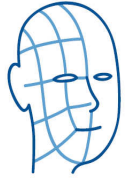


Sagem Sécurité
SAFRAN Group

<21/02/08 , End Users Meeting>

Page 1 / 10

This document is the property of 3D FACE Parties and shall not be distributed or reproduced without the formal approval of the 3D



3D Face Prototype

- **Context of the system prototype: tests on field**
- **Tests organization**
- **Prototype physical layout**
- **Enrolment session**
- **Verification session**
- **Scientific work during the tests**

3D Face Prototype Tests on field

■ **A prototype dedicated for tests on field.**

■ **3 sites:**

- ◆ **Berlin Airports (Schönefeld)**
- ◆ **BKA (Wiesbaden)**
- ◆ **Salzburg Airport**

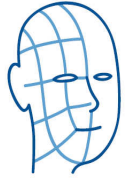
■ **Foreseen number of volunteers:**

- ◆ **Berlin: 100**
- ◆ **BKA: 100**
- ◆ **Salzburg: 200**



3D Face Prototype Tests organization

- **1st of July 2008: Software and hardware are ready for deployment**
- **Steps of the tests:**
 - ◆ **Enrolment of the participants**
 - ▶ the enrolees get a 3D FACE RFID card
 - ◆ **Access control tests**
 - ▶ the participants use the system as an access control system
 - ▶ the pilot system does not replace the legacy system
 - ◆ **At regular intervals: back up of some data for off line research**



3D Face Prototype

What offline use of which data ?

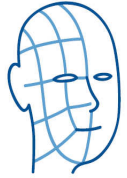
■ Goals of the Backups:

- Be able to replay performance tests
- Data exchanged in a very strict legal frame
- Use of “anonymous” data only

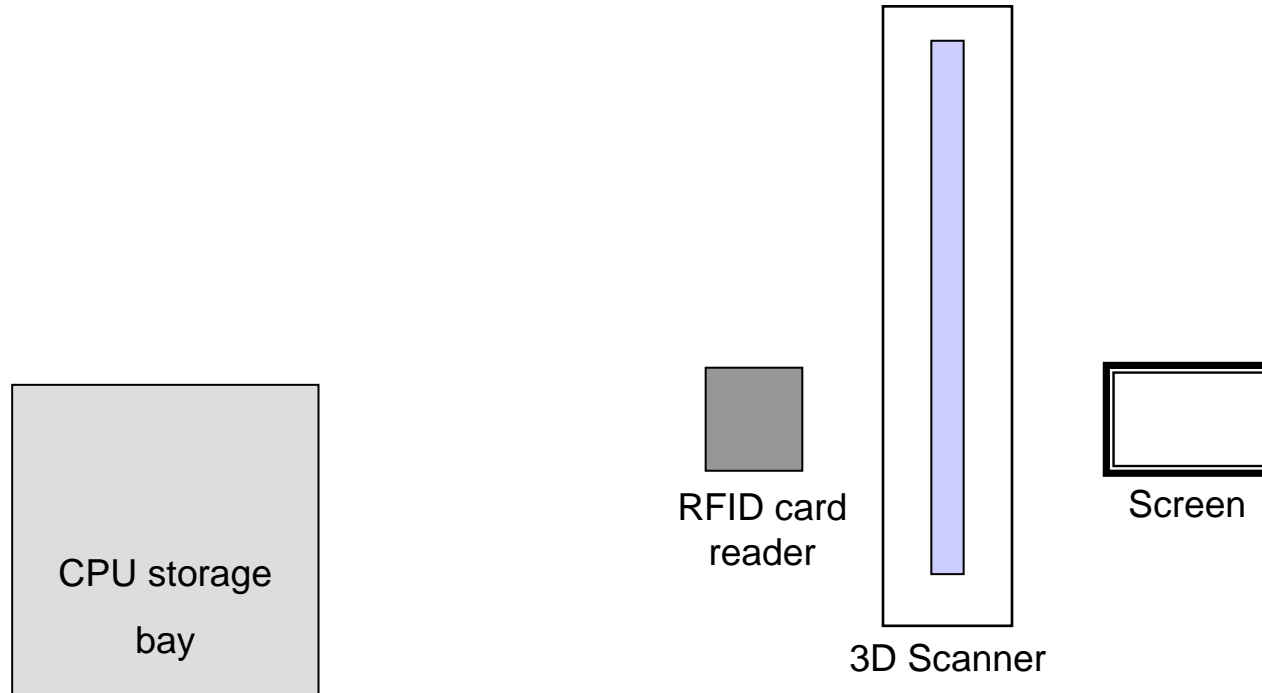
■ What is logged:

- participant ID (only airports keep correspondence between names and Ids)
- 2D+3D acquired data + processed data
- number of verification sessions (incentive policy)
- Statistics on verification success





3D Face Prototype Prototype layout



3D Face Prototype Prototype layout

■ Data stored on the token:

- ✦ Participant ID and Height
- ✦ Biometric templates / Biometric data

■ 3D Scanner:

- ✦ Performs
 - *height adjustment*
 - *2D High Resolution and 3D acquisitions*
- ✦ Eye safe (60825-9)

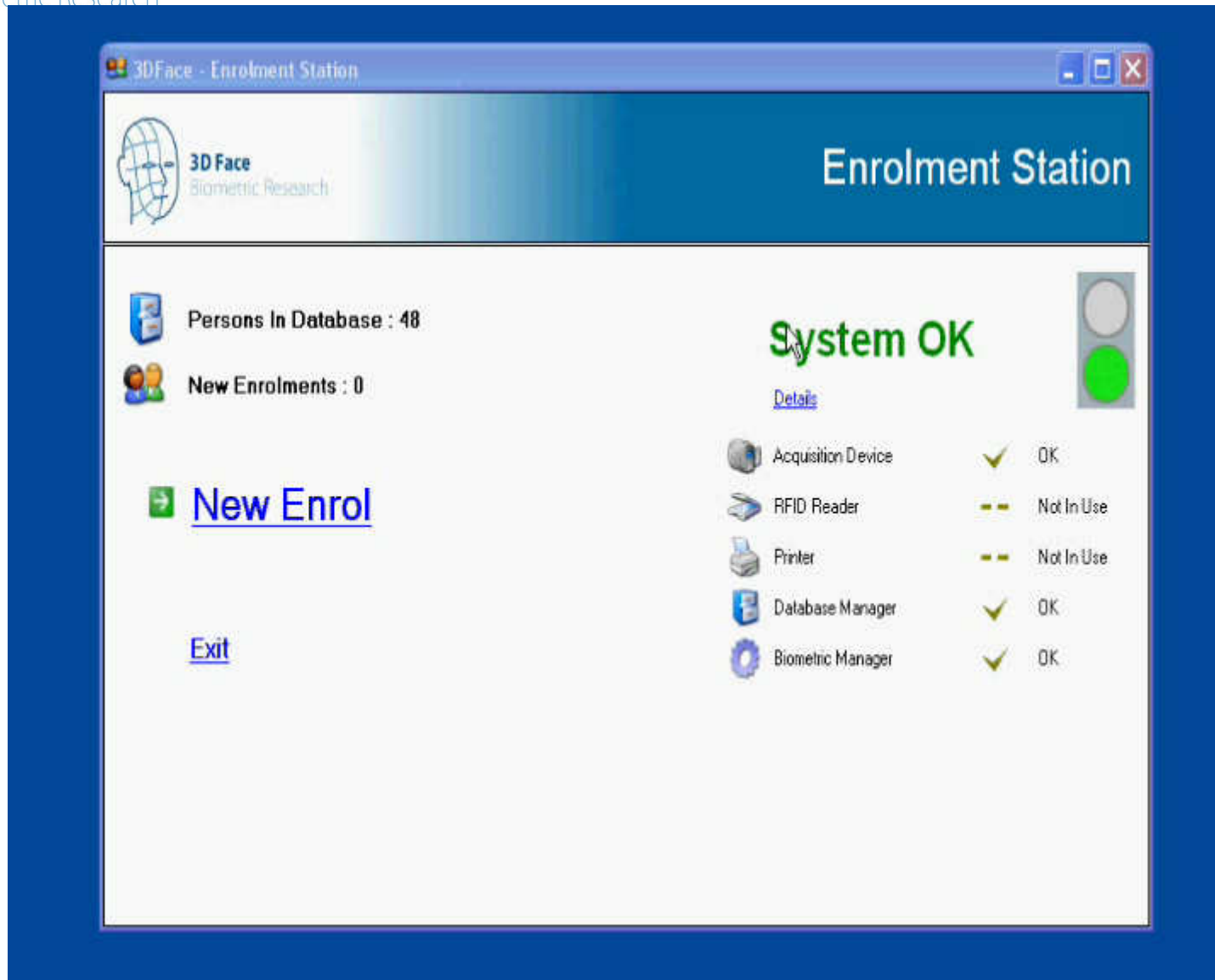


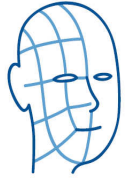
3D Face
Biometric Research

3D Face Prototype Enrollment session

■ Enrollment session

- ◆ **enrolment time: around 5 minutes (time necessary for explanations)**
- ◆ **Enrolment procedure**





3D Face
Biometric Research

3D Face Prototype Verification session

■ Verification session

- ◆ **Verification time: between 10 and 20 seconds (depending on the tested scenario)**
- ◆ **Verification procedure ...**

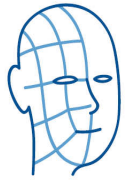


Sagem Sécurité
SAFRAN Group

<21/02/08 , End Users Meeting>

Page 10 / 10

This document is the property of 3D FACE Parties and shall not be distributed or reproduced without the formal approval of the 3D



3D Face
Biometric Research

Verification station

Put your camera on the reader

Taille spécifique (pixels)	1960 x 768
Résolution	15,0 frames/s
Couleurs	True Color
Compression	Microsoft Video 1
Enregistrement audio	Activé

Utilisez un clavier pour arrêter la capture vidéo

Lecture Cote

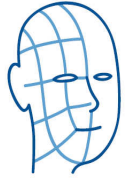
3D Face Prototype scientific work during the tests

■ On the field:

- ◆ **system ergonomics**
- ◆ **users acceptance**
- ◆ **different scenario:**
 - ▶ **template on the card**
 - ▶ **template on a database**
 - ▶ **template privacy**

■ Tests off line

- ◆ **false rejection analysis**
- ◆ **false acceptance tests**
- ◆ **algorithms improvements**



3D Face
Biometric Research

3D Face Prototype

Thank you



Sagem Sécurité
SAFRAN Group

<21/02/08 , End Users Meeting>

Page 13 / 10

This document is the property of 3D FACE Parties and shall not be distributed or reproduced without the formal approval of the 3D